



SAGE X3

EXTENDED PROFILE



OVERVIEW

FEATURE OVERVIEW

Sage X3 is a comprehensive ERP solution designed to help businesses manage their finances, operations, and supply chain with increased efficiency and agility.

It supports complex, product-centric businesses that need better control over their manufacturing, distribution, and finances, especially when operating across multiple locations and countries. Using modern cloud technology, automation, and built-in analytics, it's a flexible system that can be customized to meet evolving business needs.

KEY FEATURES

- **Production Management:** Manage all manufacturing processes with capabilities such as Bill of Materials (BOM) planning, shop floor control, quality control, and project management.
- **Supply Chain Management:** Monitor inventory in real-time to keep up with demand, encompassing purchasing, inventory management, sales management, and customer service. Built-in traceability supports lot, serial, and batch-controlled items.
- **Financial Management:** Gain control over budgets, accounting, fixed assets, and financial reporting, with support for multiple ledgers and regulatory requirements, ensuring compliance and consolidated global visibility.
- **Multi-Entity & Multi-Language Support:** Ideal for global businesses, Sage X3 supports multiple locations, currencies, and languages.
- **Business Intelligence & Reporting:** Embedded analytics and customizable dashboards provide actionable insights for decision-making.
- **Robust Planning:** From capital expenditure planning and budgeting models to the Projected Stock Report and access to real-time vessel location information, Sage X3 helps you shift to proactive planning and quicker data-backed decisions - company-wide.
- **Integration & Extensibility:** API-friendly architecture enables seamless integration with third-party applications and industry-specific add-ons.

DEPLOYMENT OPTIONS

Sage X3 offers flexible deployment models, allowing businesses to choose between on-premises, cloud-based, or hybrid solutions based on their needs.

As a cloud ERP, Sage X3 can be deployed via private cloud or hosted environments, reducing infrastructure overhead while maintaining control. Cloud deployment supports scalability, remote access, and simplified system updates, while on-premises installations offer full control over infrastructure and security policies.

INDUSTRIES SERVED

Sage X3 is widely used in:

- Manufacturing (discrete, process, and mixed-mode)
- Wholesale Distribution
- Food & Beverage
- Life Sciences
- Industrial Equipment
- Chemical & Process industries

Its depth in manufacturing and distribution differentiates it from more finance-centric ERP platforms.

Unlike traditional ERP systems, Sage X3 is built for speed, flexibility, and cost-efficiency. It is commonly selected by mid-sized to upper mid-market organizations that have outgrown entry-level ERP but don't want the complexity or cost structure of [tier-one](#) vendors. It provides a robust, industry-oriented solution that adapts to unique operational workflows.

With rapid implementation options, an intuitive browser-based user experience, and scalable architecture, Sage X3 helps organizations reduce operational friction, improve visibility, and support sustainable growth.

GLOBAL BUSINESS SUPPORT

Designed for multinational organizations, Sage X3 handles multiple companies, sites, languages, currencies, and legislative requirements.

Country-specific localizations and tax handling support compliance while enabling centralized oversight. Its ability to manage complex global operations makes it a strong fit for internationally distributed businesses.

CUSTOMIZATION OPTIONS

Sage software is customizable to meet company-specific processes, user roles, and preferences. Visual processes, automated workflows and alerts, document management, and communication tools are features available in the system. It is designed to support global organizations with multiple companies, sites, languages, currencies, and legislations.

Customizable add-on tools extend software capabilities, and it interfaces with third-party software including eCommerce, tax management, advanced warehousing, and more.

SAFE ENTERPRISE INTELLIGENCE

Powerful enterprise intelligence tools allow businesses to make data-driven decisions. With the ability to aggregate and analyze data from multiple sources, users can generate real-time insights and custom reports, enabling more informed decision-making.

- **Production management for manufacturers:** Sage X3 provides advanced production management capabilities. It supports detailed production planning, scheduling, and quality control, helping businesses optimize their manufacturing processes and reduce operational costs.
- **Data and analytics:** The platform's data and analytics features empower businesses to analyze large datasets and track key performance indicators (KPIs). This capability helps in identifying trends, improving forecasting accuracy, and driving strategic decision-making.
- **Advanced workflow automation:** Sage X3 uses visual processes, automated workflows, alerts and communication tools to optimize operations. These features are customizable to suit company-specific needs, improving productivity and collaboration.

ADDRESSING COMMON QUERIES

HOW MUCH DOES SAGE X3 COST?

The cost of Sage X3 varies based on deployment options, user requirements, and additional modules. Businesses can choose between on-premises and cloud-based solutions, with pricing tailored to their specific needs.

IS SAGE X3 THE SAME AS SAGE 300?

No. Sage X3 and Sage 300 serve different market segments. [Sage 300](#) targets small to lower mid-sized businesses, while Sage X3 supports larger, more complex organizations with advanced manufacturing, distribution, and global requirements.

Comparatively, [Sage Intacct](#) focuses primarily on financial management, whereas Sage X3 delivers broader operational depth across manufacturing and supply chain.



SOFTWARE SPECIFICATION

OVERVIEW	
PRODUCT NAME	Sage X3
BUSINESS SECTORS	
DISTRIBUTION	✓
GOVERNMENT & NPO	✓
MANUFACTURING	✓
RETAIL	✓
SERVICES	✓
INDUSTRY	
AEROSPACE & DEFENSE	✓
AUTOMOTIVE	✓
CHEMICAL	✓
CONSTRUCTION	✓
COSMETICS	✓
ELECTRONICS	✓
ENERGY/POWER/UTILITIES	✓
ENGINEERING	✓
FASHION	✓
FINANCIAL SERVICES	✓

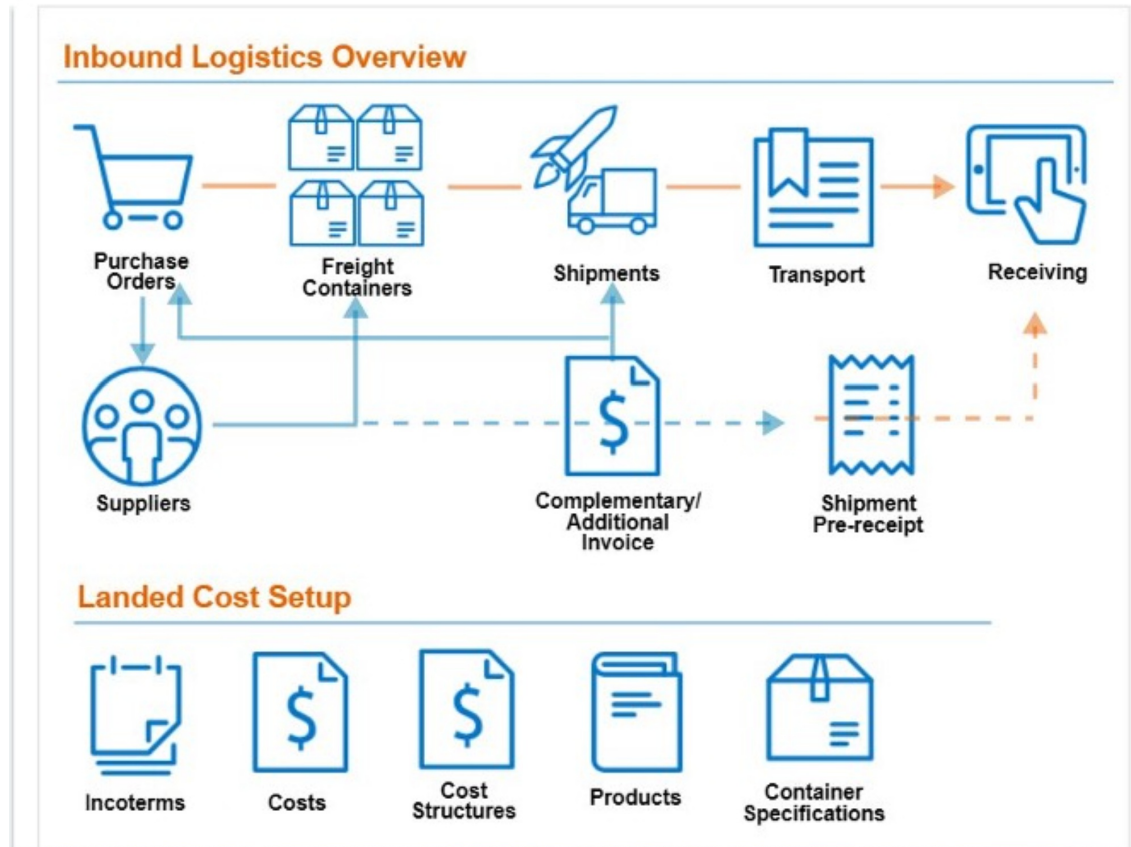
FOOD & BEVERAGE	✓
LOCAL GOVERNMENT	✓
MEDIA	✓
MEDICAL & HEALTHCARE	✓
METALWORKING	✓
OILFIELD	✓
PACKAGING	✓
PAINT & ADHESIVES	✓
PHARMACEUTICAL	✓
PLASTICS & RUBBER	✓
PRINT & DESIGN	✓
RENTAL	✓
TELECOMMUNICATIONS	✓
WOODWORKING	✓
CANNABIS	✗
EDUCATION	✗
NONPROFIT	✓
ERP SOFTWARE FEATURES	
BILLING	✗
BUSINESS INTELLIGENCE/ANALYTICS	✓
COSTING	✗
CRM	✗
CUSTOMER SERVICE	✗
PRODUCT DESIGN	✗
FINANCIALS & ACCOUNTING	✓

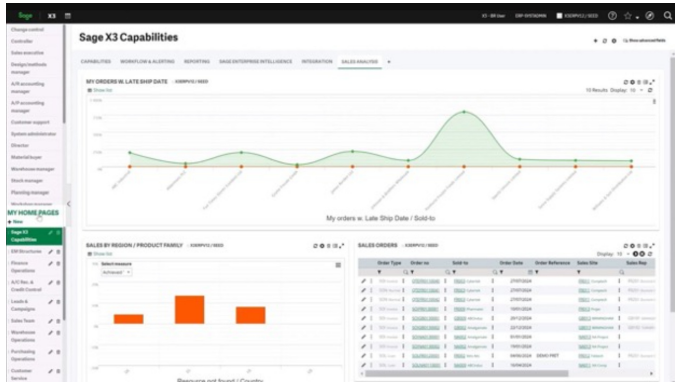
HR	✗
INVENTORY MANAGEMENT	✗
ORDER MANAGEMENT	✗
PLANNING & SCHEDULING	✓
PROJECT MANAGEMENT	✓
PURCHASING	✗
QUALITY CONTROL	✗
SALES	✗
SHIPPING & DISTRIBUTION	✗
SUPPLY CHAIN MANAGEMENT	✓
WAREHOUSE MANAGEMENT	✗
ASSET MANAGEMENT	✗
DOCUMENT MANAGEMENT	✗
CUSTOMER SUITABILITY	
ENTERPRISE (1000+ EMPLOYEES)	✓
MEDIUM SIZE (251-1000 EMPLOYEES)	✓
SMALL BUSINESS (1-250 EMPLOYEES)	✗
ADDITIONAL PRODUCT INFO	
MULTI LANGUAGE	✓
MULTI CURRENCY	✓
CUSTOMIZABLE	✓
SYSTEM HOSTING	
CLOUD	✓
INSTALLED ON PREMISE	✓

SUPPORT LOCATIONS	
AFRICA	✓
ANTARCTICA	✗
ASIA	✓
AUSTRALIA	✓
EUROPE	✓
NORTH AMERICA	✓
SOUTH AMERICA	✓
FURTHER INFORMATION	
PRICING	Subscription model, dependent on options.

SOFTWARE SCREENSHOTS

Inbound Logistics Overview





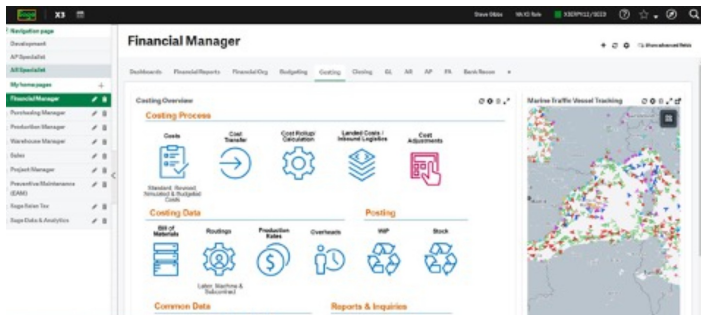
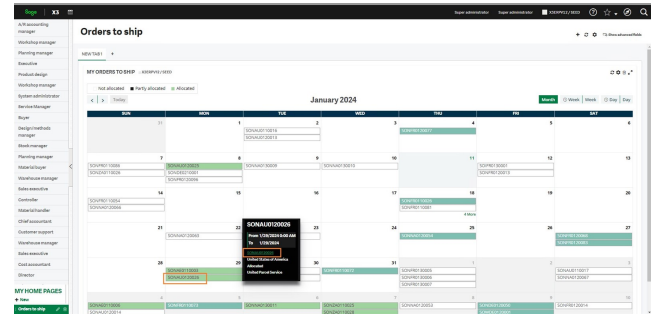
Budget vs Actual

Organization: NA (NAIS) | Company: NA (NAIS) | Calendar: 12/31/2023 | Fiscal Year: 2023 | Cost Center: All Costs | Budget Version: 1011 - Cost Center Budget

Month/Year	Actual	Budget	YTD	Budget Variance %	Variance	Comments
1/2023	100,000,000	100,000,000	100,000,000	0%	0	
2/2023	100,000,000	100,000,000	200,000,000	0%	0	
3/2023	100,000,000	100,000,000	300,000,000	0%	0	
4/2023	100,000,000	100,000,000	400,000,000	0%	0	
5/2023	100,000,000	100,000,000	500,000,000	0%	0	
6/2023	100,000,000	100,000,000	600,000,000	0%	0	
7/2023	100,000,000	100,000,000	700,000,000	0%	0	
8/2023	100,000,000	100,000,000	800,000,000	0%	0	
9/2023	100,000,000	100,000,000	900,000,000	0%	0	
10/2023	100,000,000	100,000,000	1,000,000,000	0%	0	
11/2023	100,000,000	100,000,000	1,100,000,000	0%	0	
12/2023	100,000,000	100,000,000	1,200,000,000	0%	0	
2023	1,200,000,000	1,200,000,000	1,200,000,000	0%	0	

Company Budget: NA (NAIS) - NA (NAIS) (NAIS)

- ▶ CAREX - Cost Center Budget
- ▶ LRP - Long Range planning
- ▶ N11 - V1 - Initial Version
- ▶ N11 - V2 - Current Version
- ▶ N11 - V3 - Best Case
- ▶ N14 - Budget North America 2023 v2
- ▶ N20 - Maintenance Budget by Machine
- ▶ N21 - 2019 Maintenance Budget



Time classification CRE

Code: [] Description: []

Status: [] Priority: []

Type: []

Internal [] External [] Active []

Pricing: [] Origin: []

Target Date: [] Progress: 45% of 100%

Target Date: 07/01/2023

Refresh

Sage X3 Mobile App

Receipt

Stock control

Picking

LPN

Transfer

Other

Manufacturing

Project

By Identifier

