



# GLOBAL SHOP SOLUTIONS ERP SOFTWARE

## EXTENDED PROFILE



## OVERVIEW

We simplify your manufacturing.™ Global Shop Solutions AI-driven ERP software provides the applications needed to deliver a quality part on time, every time, from quote to cash and everything in between, including shop management, scheduling, inventory, accounting, quality control, CRM, and 25 more.

Built with AI in mind and available in the cloud or on-premises, our manufacturing customers benefit from real-time inventory accuracy, improved on-time delivery, lower administrative costs, increased sales, and improved customer service.

Headquarters in The Woodlands, Texas, includes a state-of-the-art R&D facility and Global Shop Solutions training center. Through our offices in the U.S., Mexico, Indonesia, Singapore, Australia, New Zealand and the United Kingdom, the company supports thousands of manufacturing facilities in over 25 countries and nearly 30 industries.



## SOFTWARE SPECIFICATION

<b>OVERVIEW</b>	
<b>PRODUCT NAME</b>	Global Shop Solutions ERP Software
<b>BUSINESS SECTORS</b>	
<b>DISTRIBUTION</b>	✗
<b>GOVERNMENT &amp; NPO</b>	✗
<b>MANUFACTURING</b>	✓
<b>RETAIL</b>	✗
<b>SERVICES</b>	✗
<b>INDUSTRY</b>	
<b>AEROSPACE &amp; DEFENSE</b>	✓
<b>AUTOMOTIVE</b>	✓
<b>CHEMICAL</b>	✗
<b>CONSTRUCTION</b>	✓
<b>COSMETICS</b>	✗
<b>ELECTRONICS</b>	✓
<b>ENERGY/POWER/UTILITIES</b>	✗
<b>ENGINEERING</b>	✓
<b>FASHION</b>	✗
<b>FINANCIAL SERVICES</b>	✗

FOOD & BEVERAGE	✗
LOCAL GOVERNMENT	✓
MEDIA	✗
MEDICAL & HEALTHCARE	✓
METALWORKING	✓
OILFIELD	✓
PACKAGING	✓
PAINT & ADHESIVES	✗
PHARMACEUTICAL	✗
PLASTICS & RUBBER	✓
PRINT & DESIGN	✗
RENTAL	✗
TELECOMMUNICATIONS	✗
WOODWORKING	✓
CANNABIS	✗
EDUCATION	✗
NONPROFIT	✗
<b>ERP SOFTWARE FEATURES</b>	
BILLING	✓
BUSINESS INTELLIGENCE/ANALYTICS	✓
COSTING	✓
CRM	✓
CUSTOMER SERVICE	✓
PRODUCT DESIGN	✓
FINANCIALS & ACCOUNTING	✓

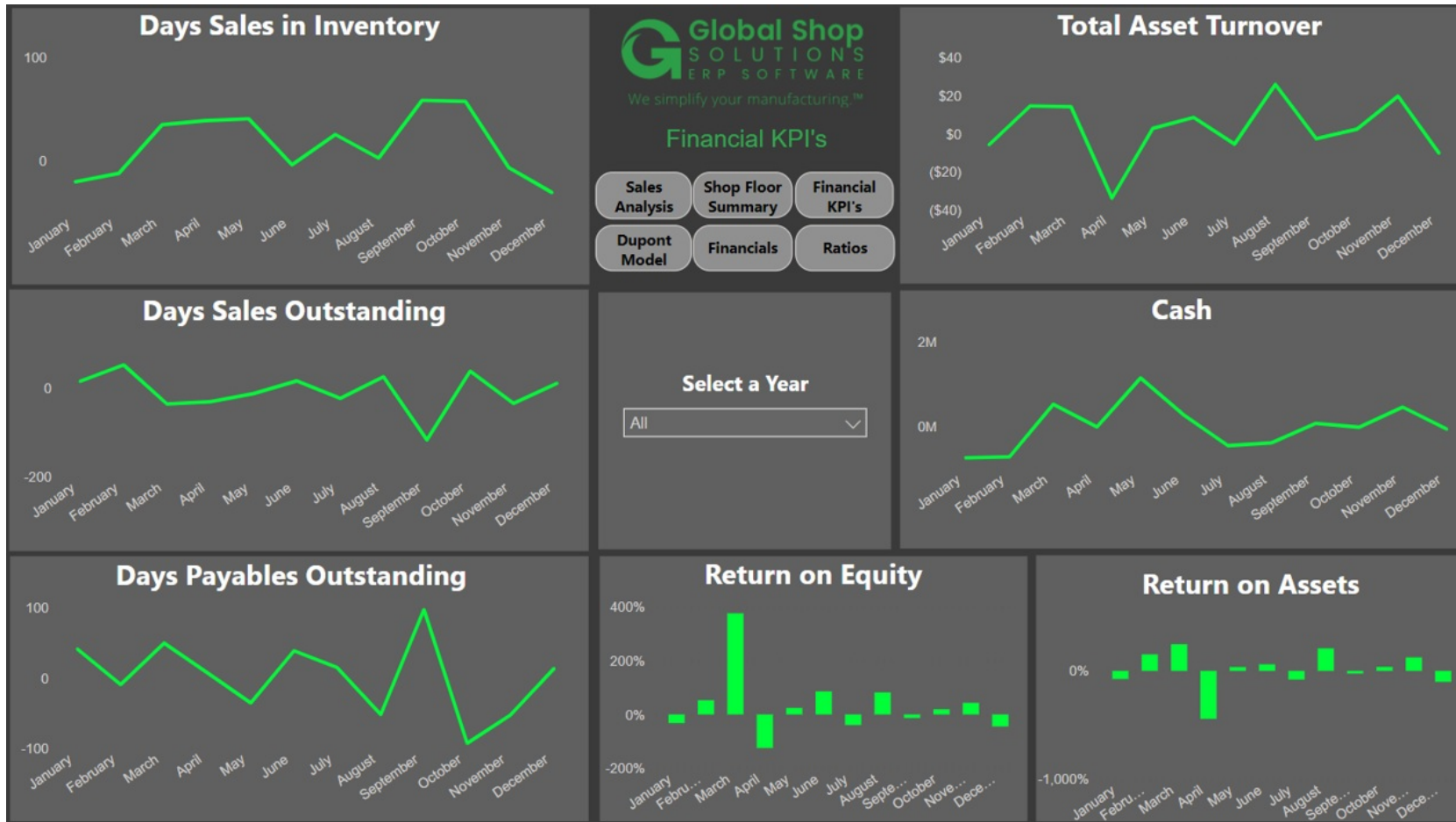
HR	✓
INVENTORY MANAGEMENT	✓
ORDER MANAGEMENT	✓
PLANNING & SCHEDULING	✓
PROJECT MANAGEMENT	✓
PURCHASING	✓
QUALITY CONTROL	✓
SALES	✓
SHIPPING & DISTRIBUTION	✓
SUPPLY CHAIN MANAGEMENT	✗
WAREHOUSE MANAGEMENT	✗
ASSET MANAGEMENT	✓
DOCUMENT MANAGEMENT	✓
<b>CUSTOMER SUITABILITY</b>	
ENTERPRISE (1000+ EMPLOYEES)	✓
MEDIUM SIZE (251-1000 EMPLOYEES)	✓
SMALL BUSINESS (1-250 EMPLOYEES)	✓
<b>ADDITIONAL PRODUCT INFO</b>	
MULTI LANGUAGE	✓
MULTI CURRENCY	✓
CUSTOMIZABLE	✗
<b>SYSTEM HOSTING</b>	
CLOUD	✓
INSTALLED ON PREMISE	✓
<b>FURTHER INFORMATION</b>	

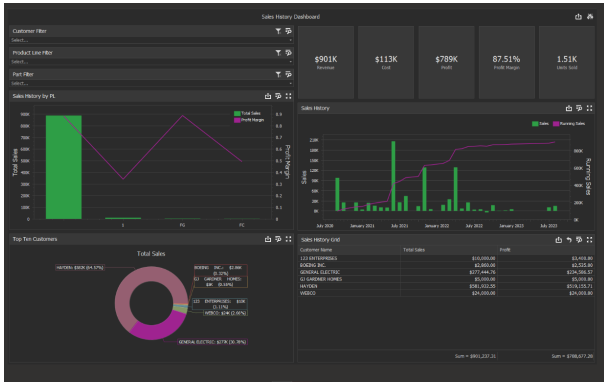
**PRICING**

Not Available



## SOFTWARE SCREENSHOTS





### Global Shop SOLUTIONS

Home | Dashboard | Reports | Settings | Help

Global Shop On-line System - Wm ID: 0000004 (TST) - 2023.1.67.484

Thursday, October 12, 2023 8:09 PM

JANE BROWN  
1000  
Clicked in at:

Home | Doc Control | Sync | Scan | Script 1 | Script 2 | Script 3 | Update Work | View | Serial | Comments | Material | Work Order View

## Work Order 903365-

Router: FINISHED GOOD Rev: FINISHED PART Description: FINISHED PART

Part: FINISHED GOOD Rev: Description: FINISHED PART

Order Date: 3/29/2022 Due Date: 4/6/2022

Customer: CUSTOM Customer Name: GSS Customer

Seq	Type	Part / WC	Description	Start	Due	Completed Hours	Co Pie
000100	M	RAW MATERIAL	RAW MATERIAL	4/20/2023	4/24/2023	0	10
000200	M	SAW1	SWA	2/7/2025	2/11/2025	0	1
000300	L	INS1	INSPECTION	2/12/2025	2/19/2025	0	1
001000	M	NEW MATERIAL		2/17/2025	2/19/2025	0	1
001100	M	NEW PART		2/17/2025	2/19/2025	0	1

### AP Invoice Details

Vendor: ADMR CO I Invoice: 000025 Invoice Date: 12/27/2023

Supplier Name: TOWNS TOOLS Supplier Invoice: 000028 Invoice Date: 12/27/2023

Subtotal: \$55.00 Tax: \$0.00 Total: \$55.00

Part: 001 Part Description: FINISHED GOOD

Part	Part Description	QTY	Unit Price	Amount
001	FINISHED GOOD	1	\$55.00	\$55.00
001	FINISHED GOOD	1	\$55.00	\$55.00

Save Save and Approve Reject Skip Text