



SYSPRO

EXTENDED PROFILE

syspro

OVERVIEW

Syspro is a global purpose-built ERP for manufacturing and distribution, helping mid-sized companies operate and grow with confidence.

With a cloud-first, AI-enabled foundation and more than 40 years of sector expertise, Syspro keeps production efficient, supply chains visible, cash cycles under control, and compliance built-in.

Our solutions embed proven manufacturing best practices, reduce total cost of ownership, and deliver measurable value through streamlined processes and industry-ready integrations.

Customers from Ken's Foods to Rhodes Food Group rely on Syspro to keep operations running smoothly, margins strong, and decisions well-informed.

Syspro. Smarter. Faster. Built for Your Industry Syspro ERP helps you:

- **Achieve Operational Excellence:** Get real-time visibility from the shop floor to the warehouse to delivery. Syspro provides manufacturing operations management (MOM) and supply chain orchestration as the transactional backbone for confident, efficient operations across your entire value chain.
- **Drive Profitability:** Digitize and automate your order-to-cash and procure-to-pay processes. Accelerate collections, control working capital, and uncover bottom-line efficiencies through intelligent automation and business process optimization.
- **Ensure Compliance & Traceability:** Protect your margins and reputation with built-in lot-level genealogy, quality management systems (QMS), and end-to-end traceability by design. Meet regulatory requirements including FDA, ISO, and ESG reporting standards.
- **Leverage AI-Enabled Insights:** Use intelligent tools powered by machine learning for demand forecasting, predictive analytics, anomaly detection, and quality monitoring to make smarter, data-driven decisions that optimize production planning and inventory optimization.

We partner with businesses ranging from family-owned operations to established global manufacturers across industries including food and beverage manufacturing, automotive parts, electronics assembly, pharmaceuticals, and industrial equipment.

Our cloud ERP platform is a strategic tool that allows you to concentrate on what you do best—building your business—while we handle the operational complexity of modern manufacturing and distribution management. Languages Supported German, English, French, Dutch, Spanish Product Description Syspro is a global leader in the production of world-class ERP software, the company now caters to the specialized needs of over 15,000 licensed companies in more than 60 countries worldwide

FEATURE OVERVIEW



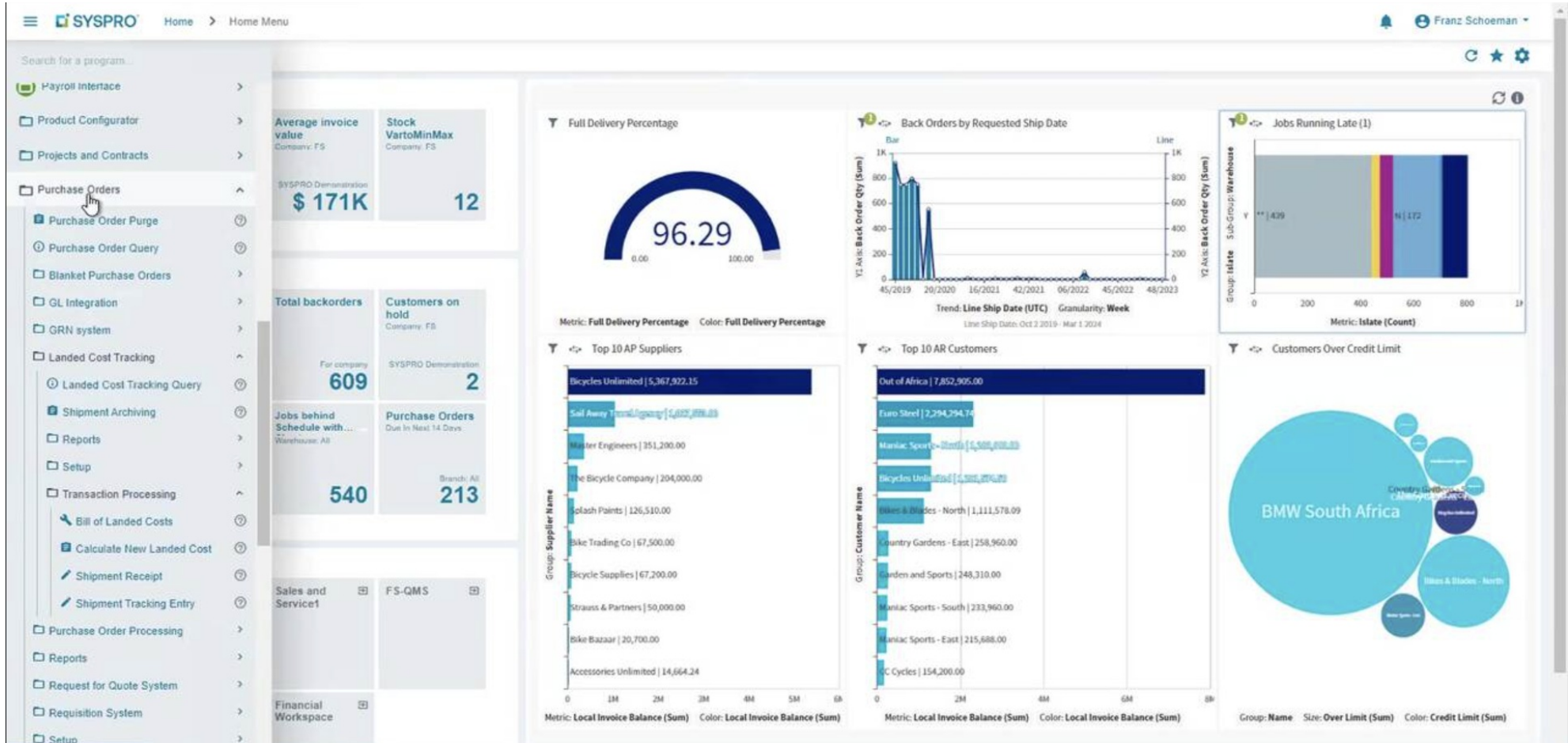
SOFTWARE SPECIFICATION

OVERVIEW	
PRODUCT NAME	Syspro
BUSINESS SECTORS	
DISTRIBUTION	✗
GOVERNMENT & NPO	✗
MANUFACTURING	✓
RETAIL	✗
SERVICES	✗
INDUSTRY	
AEROSPACE & DEFENSE	✓
AUTOMOTIVE	✓
CHEMICAL	✓
CONSTRUCTION	✗
COSMETICS	✗
ELECTRONICS	✓
ENERGY/POWER/UTILITIES	✗
ENGINEERING	✓
FASHION	✗
FINANCIAL SERVICES	✗
FOOD & BEVERAGE	✓
LOCAL GOVERNMENT	✗

MEDIA	×
MEDICAL & HEALTHCARE	✓
METALWORKING	✓
OILFIELD	×
PACKAGING	✓
PAINT & ADHESIVES	×
PHARMACEUTICAL	✓
PLASTICS & RUBBER	✓
PRINT & DESIGN	×
RENTAL	×
TELECOMMUNICATIONS	×
WOODWORKING	×
CANNABIS	×
EDUCATION	×
NONPROFIT	×
ERP SOFTWARE FEATURES	
BILLING	✓
BUSINESS INTELLIGENCE/ANALYTICS	✓
COSTING	✓
CRM	✓
CUSTOMER SERVICE	✓
PRODUCT DESIGN	×
FINANCIALS & ACCOUNTING	✓
HR	✓
INVENTORY MANAGEMENT	✓

ORDER MANAGEMENT	✓
PLANNING & SCHEDULING	✓
PROJECT MANAGEMENT	✗
PURCHASING	✓
QUALITY CONTROL	✓
SALES	✓
SHIPPING & DISTRIBUTION	✓
SUPPLY CHAIN MANAGEMENT	✓
WAREHOUSE MANAGEMENT	✓
ASSET MANAGEMENT	✓
DOCUMENT MANAGEMENT	✓
CUSTOMER SUITABILITY	
ENTERPRISE (1000+ EMPLOYEES)	✓
MEDIUM SIZE (251-1000 EMPLOYEES)	✓
SMALL BUSINESS (1-250 EMPLOYEES)	✗
ADDITIONAL PRODUCT INFO	
MULTI LANGUAGE	✓
MULTI CURRENCY	✓
CUSTOMIZABLE	✗
SYSTEM HOSTING	
CLOUD	✓
INSTALLED ON PREMISE	✓
FURTHER INFORMATION	
PRICING	Not Available

SOFTWARE SCREENSHOTS



SYSPRO Home > Home Menu Account Executive

Search for a program

My Dashboards

- Customer Query
- Inventory Query
- Job Query
- Purchase Order Query
- Sales Order Query
- Supplier Query

My Menu

- Mobile Apps
- Supply Chain Portal
- Mobile WMS
- Quick Time
- Quality
- Customer Portal

Operational Insights

- Customer on Hand: 9
- Active jobs: 586
- Average Days to Ship: -677
- Total backorders: 0

Key Metrics

- UP margin percentage of 63.14%
- WIP at a glance: 17761571.44
- Average backlog value: \$ 180K

SYSPRO Home > Home Menu Account Executive

Quick Actions

- Production Role

My Dashboards

- Job Query
- WIP Multi-level Job Query
- Requisitions and Routings
- Inventory Query
- Sales Order Query
- Stock Codes

My Tasks

- Job Entry
- Back Order Review
- Job Review
- Job Confirmation
- WIP Work Center
- WIP Machine Maintenance
- Sales Order Entry Progress
- Forecast Maintenance

Reports

- Production Plan
- Production History
- Stock Maintenance
- Resource Maintenance

MES

- Planning
- Workforce
- Factory Analytics

SYSPRO Home > Home Menu Account Executive

Search for a program

Embedded Analytics

WIP Inventory by Month - Shipped

Key Metrics

- Average Inventory: -677
- WIP Inventory: 577
- Average Inventory: \$ 174K
- WIP Inventory: 10

Reports

- WIP Inventory by Month
- WIP Inventory by Branch
- WIP Inventory by Prod/Cat

SYSPRO Home > Home Menu Account Executive

Quick Actions

- Production Role

Production Information

Job	Description	Cost Variance	% Variance	Expense
8000107	Beach	495,811.07	0.00	0
8000140	Beach	0.00	0.00	0
8000141	Beach	0.00	0.00	0
8000142	Beach	0.00	0.00	0
8000143	Beach	0.00	0.00	0
8000144	Beach	0.00	0.00	0
8000145	Beach	0.00	0.00	0
8000146	Beach	0.00	0.00	0
8000147	Beach	0.00	0.00	0
8000148	Beach	0.00	0.00	0
8000149	Beach	0.00	0.00	0
8000150	Beach	0.00	0.00	0
8000151	Beach	0.00	0.00	0
8000152	Beach	0.00	0.00	0

Key Insights & Actions

- Customer on Hand: 589
- Active jobs: 8543.76
- Average Days to Ship: 194
- Total backorders: 268

My Dashboards

- Job Query
- WIP Multi-level Job Query
- Requisitions and Routings
- Inventory Query
- Sales Order Query
- Stock Codes

My Tasks

- Job Entry
- Back Order Review
- Job Review
- Job Confirmation
- WIP Work Center
- WIP Machine Maintenance
- Sales Order Entry Progress
- Forecast Maintenance

Reports

- Production Plan
- Production History
- Stock Maintenance
- Resource Maintenance