



# GODLAN'S ERP FOR MANUFACTURING EXTENDED PROFILE



## OVERVIEW

Top manufacturers choose Godlan to implement state-of-the-art manufacturing software and business processes. Godlan specializes in manufacturing performance consulting, and we utilize state of the art solutions including ERP, IIoT, CRM, BI and more. Godlan has been implementing integrated technology solutions since 1984. Godlan's manufacturing software implementation serves hundreds of customers across the US. As an Infor Gold Channel Partner, Godlan represents Infor's extended enterprise solutions. These solutions are offered in various technology platforms and support the implementation of world-class processes and practices throughout manufacturing organizations. Godlan has been honored with the prestigious Infor Partner of the Year Award, and a number of external awards such as the Global Top 100 VAR's in the Enterprise Solutions Market and the Inc5000 Fastest Growing Companies Award.



## SOFTWARE SPECIFICATION

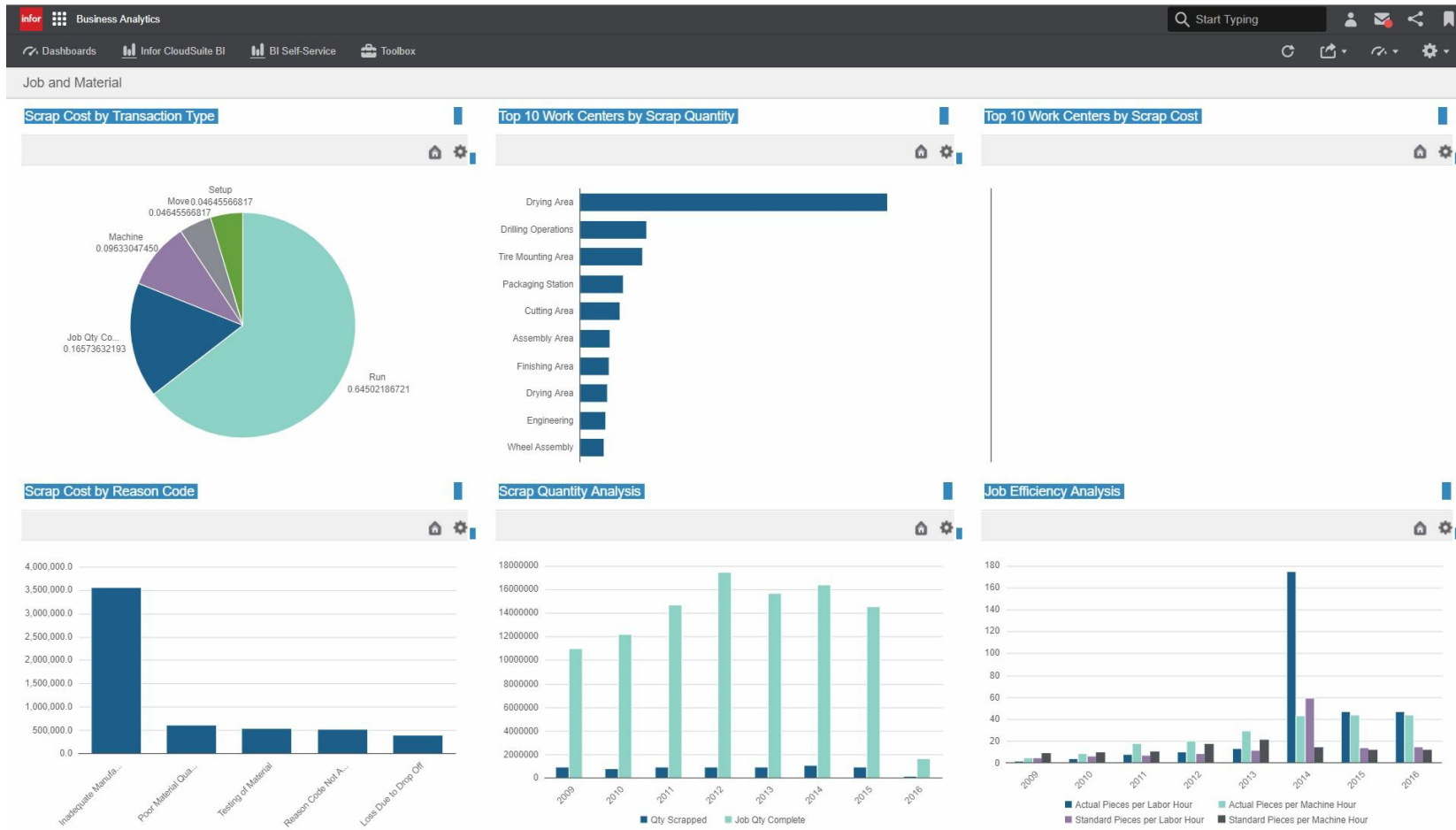
OVERVIEW	
PRODUCT NAME	Godlan's ERP for Manufacturing
BUSINESS SECTORS	
DISTRIBUTION	✗
GOVERNMENT & NPO	✗
MANUFACTURING	✓
RETAIL	✗
SERVICES	✗
INDUSTRY	
AEROSPACE & DEFENSE	✓
AUTOMOTIVE	✓
CHEMICAL	✗
CONSTRUCTION	✗
COSMETICS	✗
ELECTRONICS	✓
ENERGY/POWER/UTILITIES	✗
ENGINEERING	✓
FASHION	✗
FINANCIAL SERVICES	✗
FOOD & BEVERAGE	✗

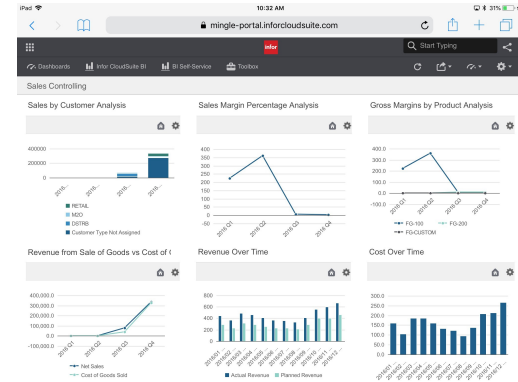
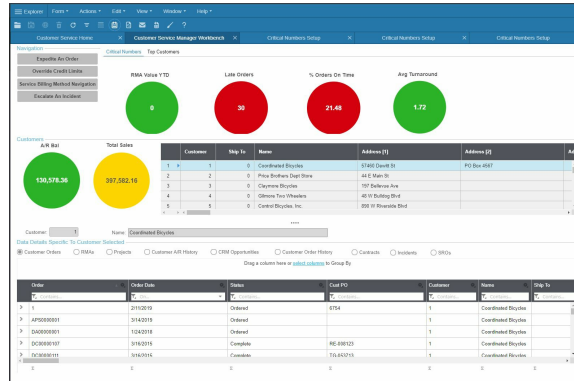
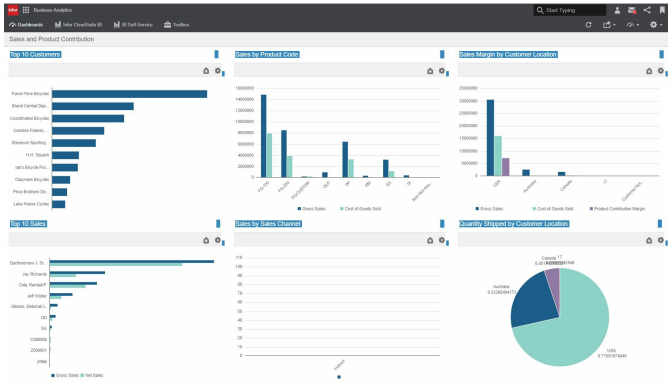
LOCAL GOVERNMENT	✗
MEDIA	✗
MEDICAL & HEALTHCARE	✗
METALWORKING	✓
OILFIELD	✓
PACKAGING	✓
PAINT & ADHESIVES	✗
PHARMACEUTICAL	✗
PLASTICS & RUBBER	✗
PRINT & DESIGN	✗
RENTAL	✗
TELECOMMUNICATIONS	✗
WOODWORKING	✓
CANNABIS	✗
EDUCATION	✗
NONPROFIT	✗
<b>ERP SOFTWARE FEATURES</b>	
BILLING	✓
BUSINESS INTELLIGENCE/ANALYTICS	✓
COSTING	✓
CRM	✓
CUSTOMER SERVICE	✓
PRODUCT DESIGN	✗
FINANCIALS & ACCOUNTING	✓

HR	✗
INVENTORY MANAGEMENT	✓
ORDER MANAGEMENT	✓
PLANNING & SCHEDULING	✓
PROJECT MANAGEMENT	✓
PURCHASING	✓
QUALITY CONTROL	✓
SALES	✓
SHIPPING & DISTRIBUTION	✓
SUPPLY CHAIN MANAGEMENT	✓
WAREHOUSE MANAGEMENT	✓
ASSET MANAGEMENT	✓
DOCUMENT MANAGEMENT	✓
<b>CUSTOMER SUITABILITY</b>	
ENTERPRISE (1000+ EMPLOYEES)	✓
MEDIUM SIZE (251-1000 EMPLOYEES)	✓
SMALL BUSINESS (1-250 EMPLOYEES)	✗
<b>FURTHER INFORMATION</b>	
PRICING	\$166 per user per month
IMPLEMENTATION TIMEFRAME	2 to 6 months average



# SOFTWARE SCREENSHOTS





Verizon 11:33 AM 86%  
Tasks

Please Approve/Reject new order DC00000412 for Larry's Bicycles. It's value is 41923.0.a...

Mar 19, 2019 at 9:02 AM

Please Approve/Reject new order DC00000403 for MEI001. It's value is 18500.0.and was creat...

Mar 19, 2019 at 9:07 AM

Please Approve/Reject new order DC00000406 for Precision Bicycles. It's value is 3456.0.an...

Feb 27, 2019 at 3:15 PM

Please assign this Req to the appropriate person

Feb 26, 2019 at 10:58 AM